



INSHUTI OF RWANDA
Annual Report FY 2022



TABLE OF CONTENTS

Our Mission.....	3
Executive Director Letter.....	4
What our Houses Provide.....	5- 6
Summary of the Building Program.....	7
Your Donations at Work.....	8
Our 2022 Accomplishments.....	9- 10
Who Are Inshuti Families?.....	11
How Inshuti Families Are Selected.....	12
Who Are our Inshuti Workers?.....	13
Inshuti Team.....	14- 16
Inshuti Financials.....	17- 19
Looking Ahead to 2022.....	20- 23





WHO WE ARE

Inshuti of Rwanda aims to alleviate homelessness and families living in deplorable conditions by funding the construction of new houses. We collaborate with Rwandans to build designed, locally sourced, and hygienic housing while providing jobs with livable wages to the local community.



OUR MISSION

Building sustainable homes in Rwanda to build wellness, stability, and a future. We are improving living conditions, creating local jobs and growing a community of Inshuti.



OUR VISION

We believe housing is a human right. Everyone deserves refuge from the elements and to raise their children in a safe environment. Secondary to housing, creating jobs and paying employees livable wages allows our Inshuti community the opportunity to support their own families.



LETTER FROM INSHUTI'S EXECUTIVE DIRECTOR



Dear Inshuti (Friends),

It has been an outstanding year for Inshuti of Rwanda, as we have made significant leaps in organizational development during the 2022 fiscal year. The growth of the Inshuti project directly correlates with the effect we have on our community in Rwanda and the number of lives impacted by our work.

The significance of our success in 2022 can be summed up into two areas, our presence in the Inshuti community and organizational growth. With the launch of a two-building season model in 2022, Inshuti guaranteed steady employment and livable wages to over 160 people daily. We began a new initiative of hosting bi-monthly Inshuti Community Meetings at our new office in Murara to connect and strengthen our relationship with house recipients. When Felix and I interviewed potential house recipient families in Murambi, we witnessed many children unable to attend school due to a lack of uniforms and books. Immediately, we knew that Inshuti must help, and our team decided to add school supplies to the provisions we provide.

And finally, after two quiet years because of Covid, we could once again host our annual Inshuti party; a joyous day where all past, present, and future Inshuti house recipients gather alongside our core group of employees to celebrate the year's accomplishments with food, song, and dance. With each new initiative and the continuation of older ones, Inshuti demonstrates to the people of Rubavu District that we are committed to supporting our community in Rwanda.

I am exceptionally proud of the effort put into building Inshuti's organizational framework. Over this past year, we focused on writing Inshuti's business plan, compiling KPI measures, advancing our accounting system, and creating policies. Our USA Board of Directors expanded, we began hosting interns, doubled our revenue, and once again were recognized by the Rubavu District for supporting vulnerable citizens in Rubavu Sector. Through our growing team's hard work and dedication, we have strengthened the structure of Inshuti in preparation for our next phase.

Incredible things are happening with Inshuti these days, and I'm eager to see what is in store for our community in 2023. We are busy applying for grants that would allow us to expand the Inshuti project by creating more jobs for the local community. There is a new partnership on the horizon to aid in developing alternative solutions for waste management, and we plan on continuing our close relationship with the Rwanda government. I am overjoyed with the prospect that in 2023, Inshuti will have sheltered 100 families!!! This is in significant part due to the generosity of each donor and supporter of Inshuti of Rwanda; you grant us the ability to continue our vital work.

With Gratitude,
Rosa



WHAT OUR HOUSES PROVIDE FAMILIES



SAFETY FROM THE ELEMENTS

Our houses are built to meet the basic need of shelter for impoverished families in Rwanda.



PREVENT THE SPREAD OF DISEASE

Each Inshuti house is built with sanitary cement flooring, a properly dug pit latrine, and provided with mosquito nets.



BASIC LIVING NECESSITIES

We wire homes with electricity and provide beds, mattresses, cookware, and a new initiative of necessary school uniforms for Inshuti children to attend school.



WHAT OUR HOUSES PROVIDE THE COMMUNITY



LIVABLE WAGES

Our budget includes livable wages for Inshuti employees, impacting more lives than just our house recipients.



SUSTAINABLE MATERIALS

We utilize local and sustainable materials to construct Inshuti houses. Such as adobe bricks, mud for mortar, and eucalyptus trees for the roof scaffolding.



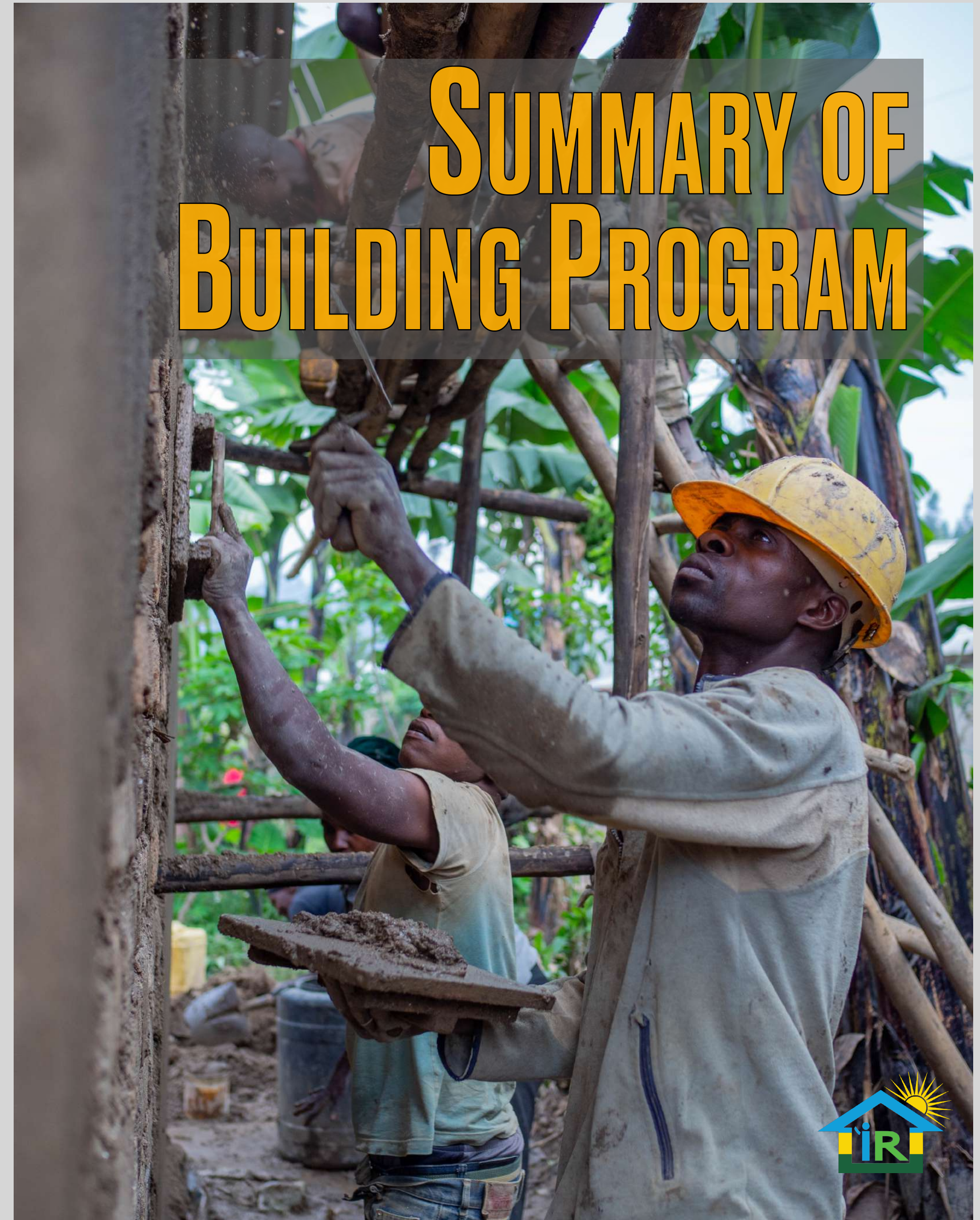
BUILDING AN INSHUTI COMMUNITY

We are building more than just houses; we are building a community of Inshuti (friends) both in Rwanda and worldwide.





We are excited to share that during our 2022 fiscal year, Inshuti of Rwanda raised \$88,416! This is the first time we have constructed homes during two building seasons, for a total of 20 new houses built! These homes have provided shelter to 103 people, who can now begin living their own independent lives.



SUMMARY OF BUILDING PROGRAM



YOUR DONATIONS AT WORK IN 2022



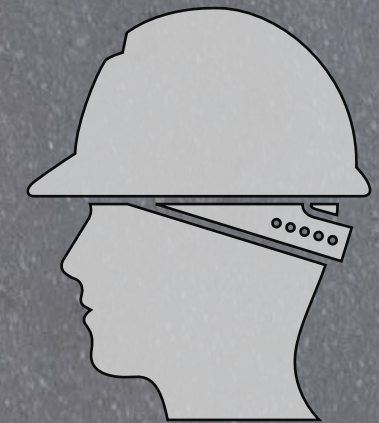
\$88,416
Raised



20 Houses
Built



103 People
Sheltered



160 Workers
Employed



OUR 2022 ACCOMPLISHMENTS



TWO BUILDING SEASONS IN 2022

Our most significant accomplishment of 2022 was moving to a two-building seasons model. By constructing homes in both January and October, we helped provide consistent employment to our Rwandan staff, thereby giving them a greater opportunity to independently support their families.



COLLABORATION WITH THE GOVERNMENT

We continue to work closely with the Rwandan government to identify families most in need of housing. Our partnership granted Inshuti credit for tax-free building materials and roofing sheets for government-selected families, helping to decrease each home's budget.





EXPANSION OF THE USA BOARD OF DIRECTORS

We are proud to announce the expansion of Inshuti's USA Board Of Directors to seven members. The new additions to our team symbolize Inshuti's commitment to organizational growth, development, and diversity. We welcome Rasheda Gillis and Molly Palmer, former Inshuti interns, and Dora Nkurunziza, a Rwanda expat, onto our board.



NEW SCHOOL UNIFORM INITIATIVE

We are committed to ensuring our families are set up for success when they receive a house. A new Inshuti initiative in 2022 provides school uniforms and supplies for all children of house recipient families. We value learning and want to guarantee more families have access to education!



INSHUTI COMMUNITY MEETINGS

Community meetings are a combination of house recipients and Inshuti team members. Each forum facilitates discussions where families can express their hardships and obtain support from each other. These meetings allow families to strengthen their community and grow through connections.

WHO ARE INSHUTI FAMILIES ?

We are committed to providing shelter to genocide survivors, single mothers and hard-working father families who live in deplorable conditions due to a lack of resources. Our families typically have three or more school-age children. By focusing on younger families, our houses will have a longer-lasting impact.




HOW ARE INSHUTI FAMILIES SELECTED?

We work closely with the Rwandan government to identify homeless families in Rubavu Sector. Eighty percent of our house recipients are selected by local government officials; however, we reserve twenty percent of families to be chosen from within our Inshuti community.



WHO ARE INSHUTI WORKERS ?



We employ local masons, workers, roofers, porters, carpenters, and an electrician, to build our Inshuti houses. Our staff members consist of previous house recipients and their families, who find purpose in helping build homes for their neighbors. Many Inshuti employees worked with us for several building seasons, further connecting and strengthening our community.





USA BOARD OF DIRECTORS



ROSA MARINO
Executive Director
Founding Member



RASHEDA GILLIS
Secretary
New Member



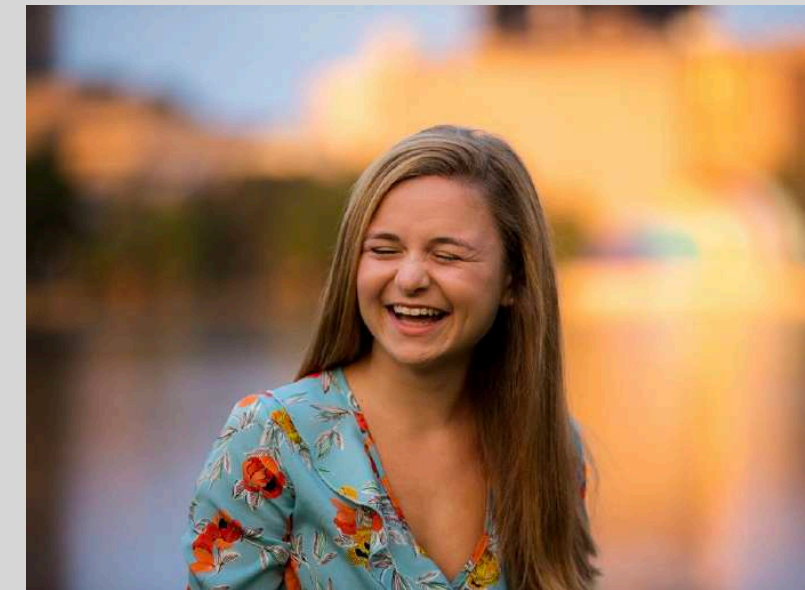
STEVE MARINO
Treasurer
Member Since 2020



SCOTT COHEN
Board Officer
Member Since 2016



BETH MITCHELL
Board Officer
Member since 2020



MOLLY PALMER
Board Officer
New Member



DORA NKURUNZIZA
Board Officer
New Member



RWANDA BOARD OF DIRECTORS



MUDAKIKWA R. ERIC
Legal Representative



MFIZI FABRICE
Deputy Representative



ROSA MARINO
Secretary



NDAMAGE JOSEPH
Treasurer



RUDASINGWA FELIX
Conflict Resolution

Inshuti's Rwandan Board of Director guide and lead the organization in a way that ensures we effectively continue to remain a Rwanda-driven project—having a second board of people who know first-hand how best to help Rwandans will solidify our goals and intentions.



INSHUTI INTERNS



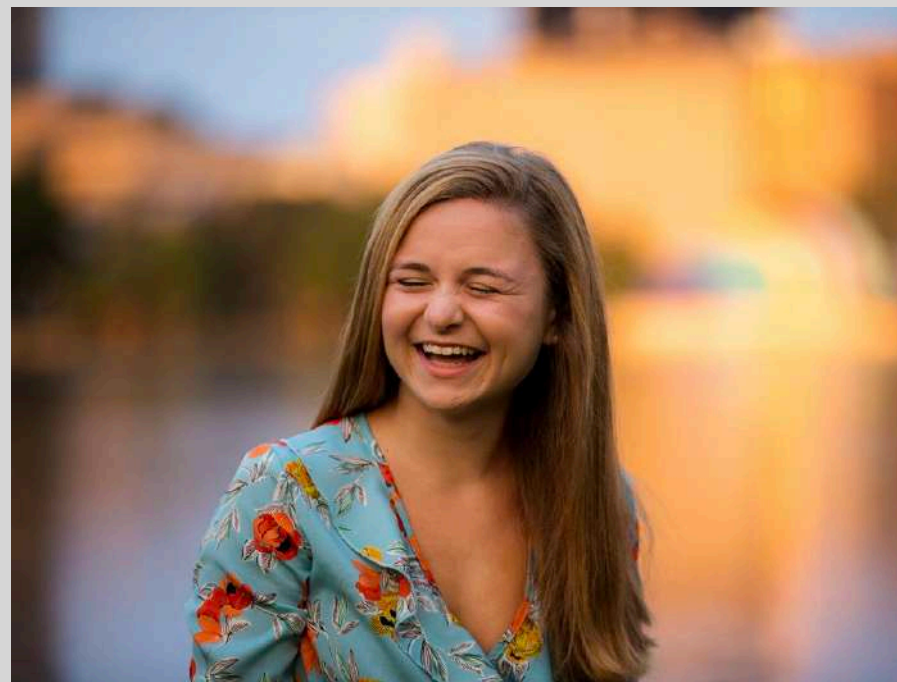
Shona Dave



Ella Reyes



Rasheda Gillis



Molly Palmer



Talaith Campbell



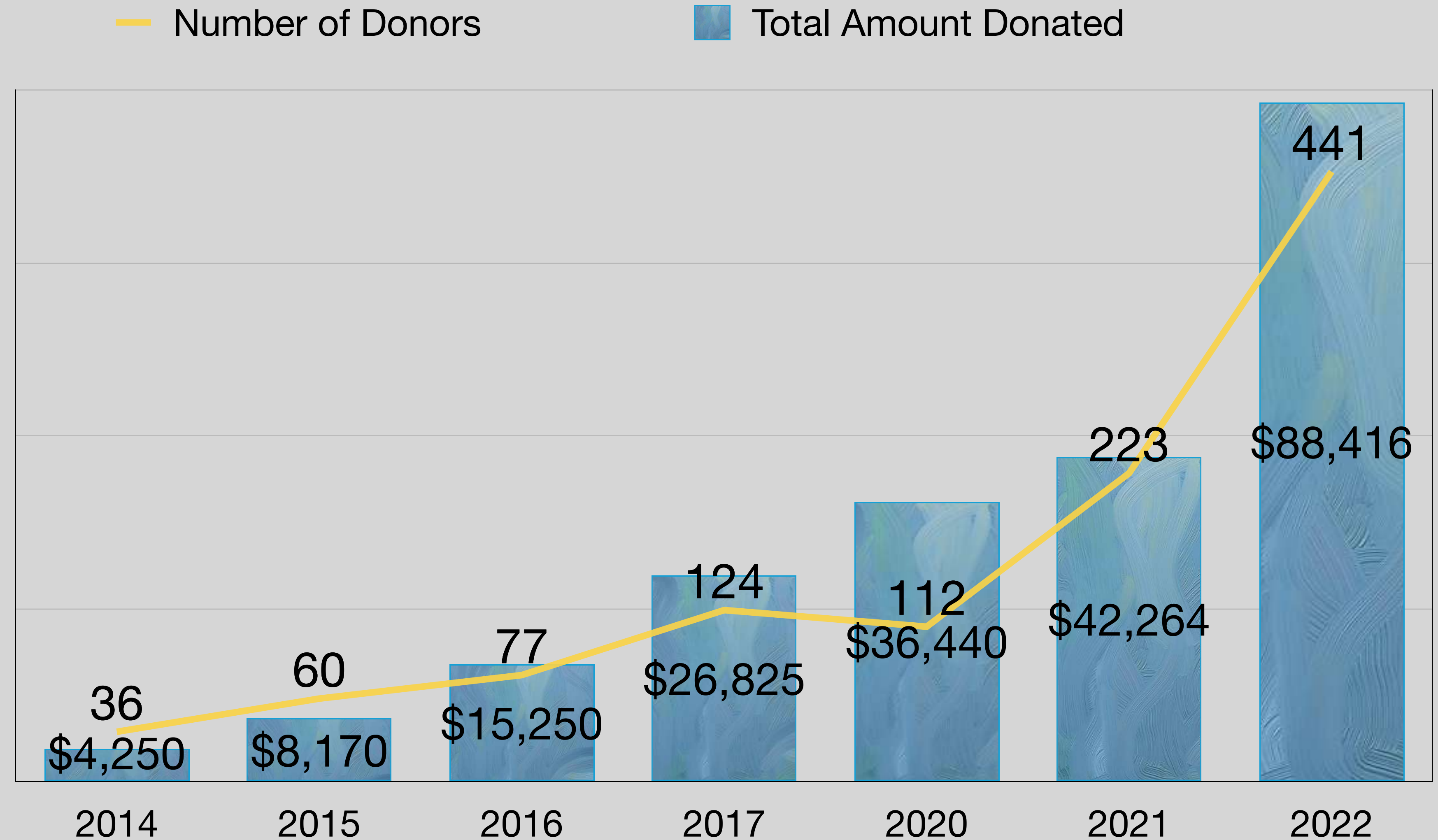
Yasmin Bumma-Dykes

Inshuti now offers NGO Management and Digital Marketing Internships through our partnership with the Intern Group. This stellar group of individuals helped us complete numerous projects this year. Such as assisting write Inshuti's business plan, compiling KPI measures, creating policies, developing annual reviews, applying for grants as well as running our social media accounts, and writing monthly Inshuti Newsletters.

INSHUTI REVENUE STREAM



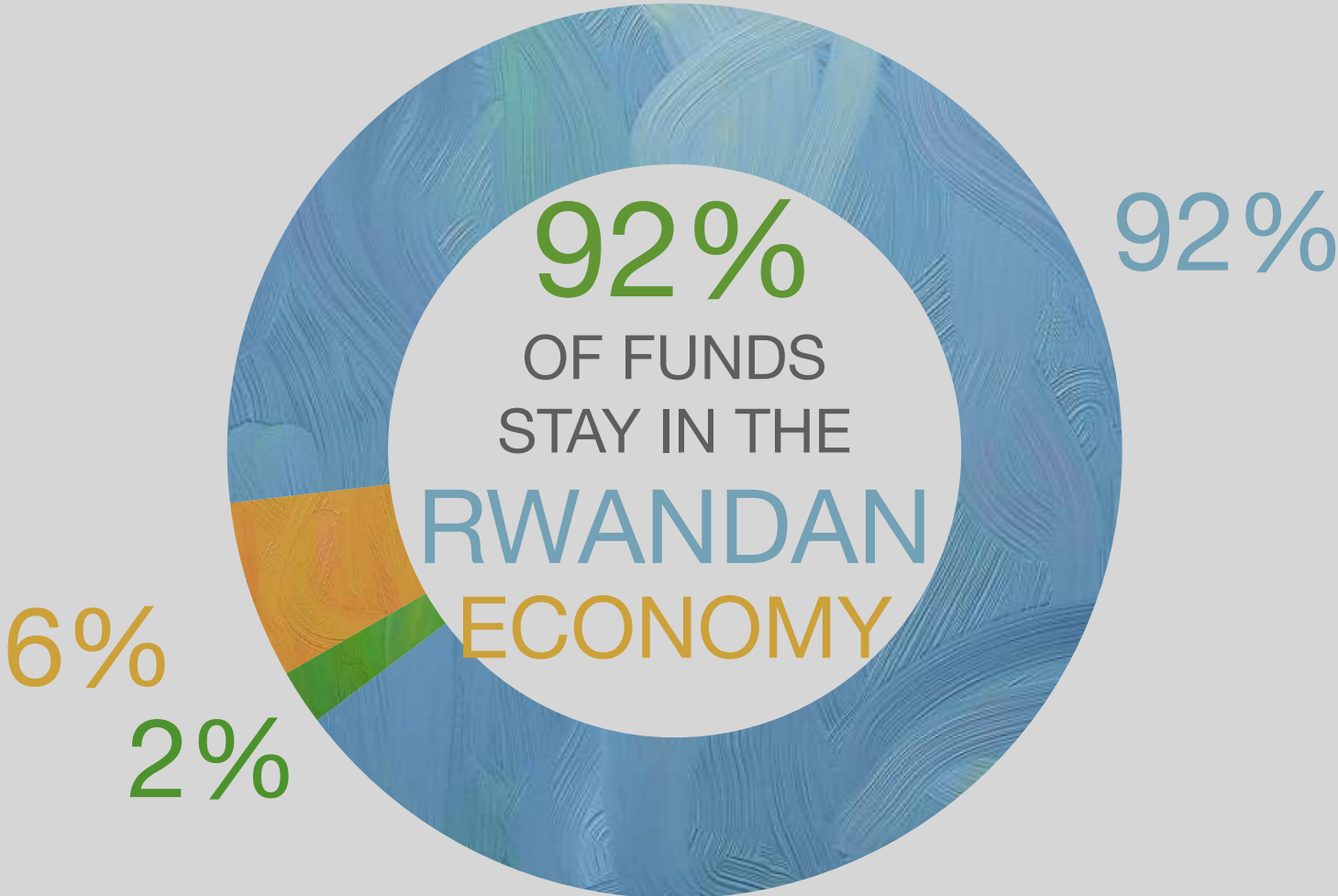
Thanks to our growing community of donors, we more than *doubled* our revenue during the 2022 fiscal year!! We are so proud of this accomplishment and deeply grateful for all our supporters who contributed to our house-building projects.



INSHUTI ALLOCATION OF EXPENSES



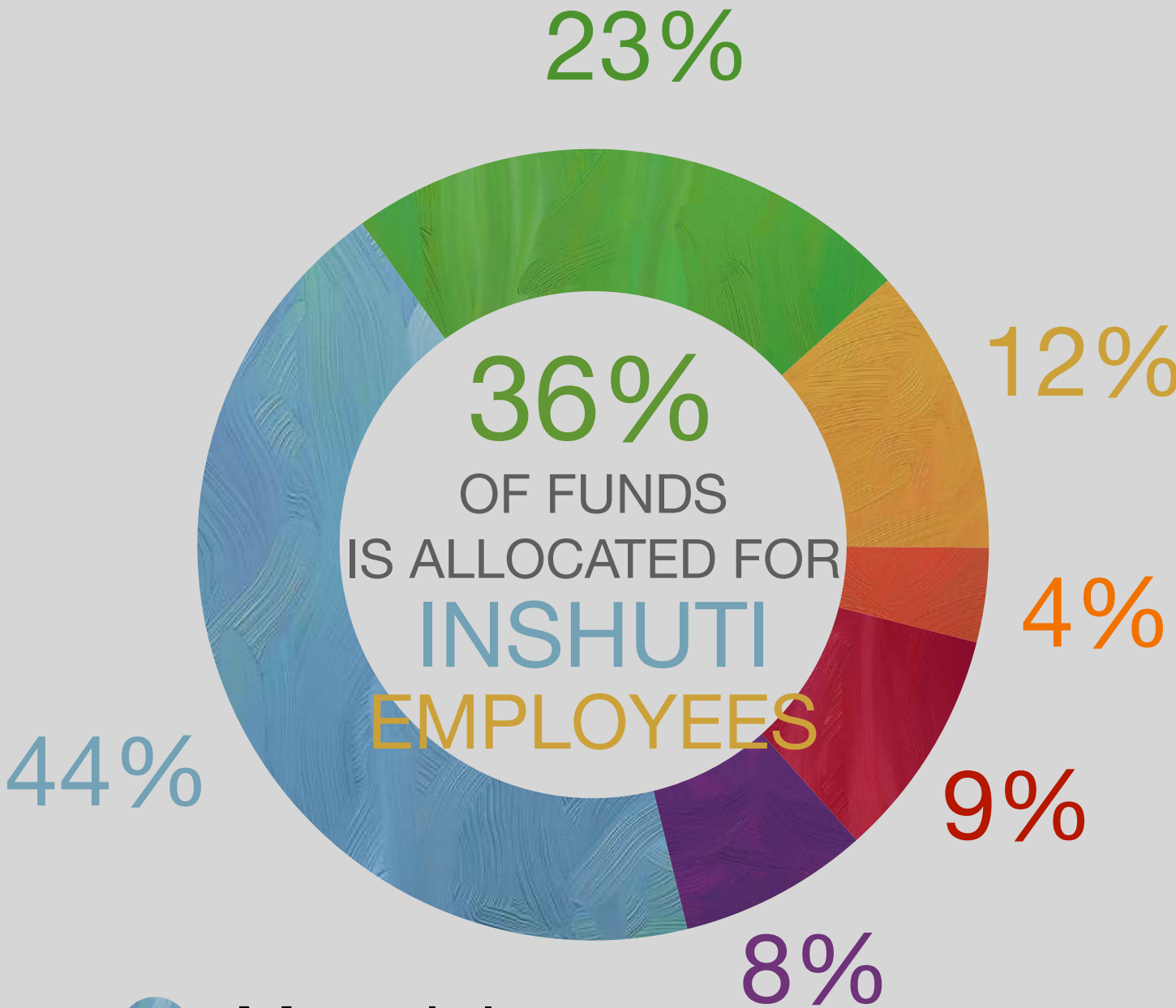
Overall Expenses



- Programming
- Fundraising
- Administration

We are proud to keep administration costs down to a minimum. That means 92% of our donation goes directly into our house-building projects and the Rwandan economy. You can be sure your money is going to those who need it most!

Program Expenses



- Materials
- Labor
- Provisions
- Engineering
- Project Coordination
- Indirect Expenses



INSHUTI FINANCES

Balance Sheet

ASSETS	End FY 2022	End FY 2021
Current Assets		
Cash & Equivalents	\$ 782	\$ 754
USA Bank Account	\$ 47,678	\$ 19,500
Rwanda Bank Accounts	\$ 14,442	\$ 507
Prepaid Expenses	\$ 120	\$ 0
Total Current Assets:	\$ 63,022	\$ 20,761
Long Term Assets		
Fixed Assets	\$ 100	\$ 0
Contributions Receivable	\$ 0	\$ 0
Total Long Term Assets:	\$ 100	\$ 0
Total Assets	\$ 63,122	\$ 20,761
LIABILITIES		
Current Liabilities		
Accounts Payable	\$ 0	\$ 0
Long Term Liabilities		
Long Term Debt	\$ 0	\$ 0
Total Liabilities:	\$ 0	\$ 0
TOTAL ASSETS & LIABILITIES	\$ 63,122	\$ 20,761

Income Statement

REVENUE	Total in USD	Percent
Personal Donations	\$ 46,848	53%
Recurring Donations	\$ 1,029	1%
Campaigns	\$ 20,207	23%
Cooking Class Fundraiser	\$ 2,003	2%
In-Kind Donations	\$ 18,329	21%
Total Revenue:	\$ 88,416	100%
EXPENSES		
Program Services		
House-Building Projects	\$ 41,681	91%
Indirect Expenses	\$ 3,715	8%
Transportation of Staff & Materials	\$ 547	1%
Total Program Services:	\$ 45,943	100%
Operating Expenses		
Program Services	\$ 45,943	92%
Rwanda Administration	\$ 1,060	2%
USA Administration	\$ 2,195	5%
Fundraising	\$ 557	1%
Total Expenses:	\$ 49,755	100%
Change in Net Assets	\$ 38,661	
Total Assets on 11/1/2022	\$ 20,871	
Net Assets End on 10/31/2022	\$ 59,532	

LOOKING AHEAD TO 2023

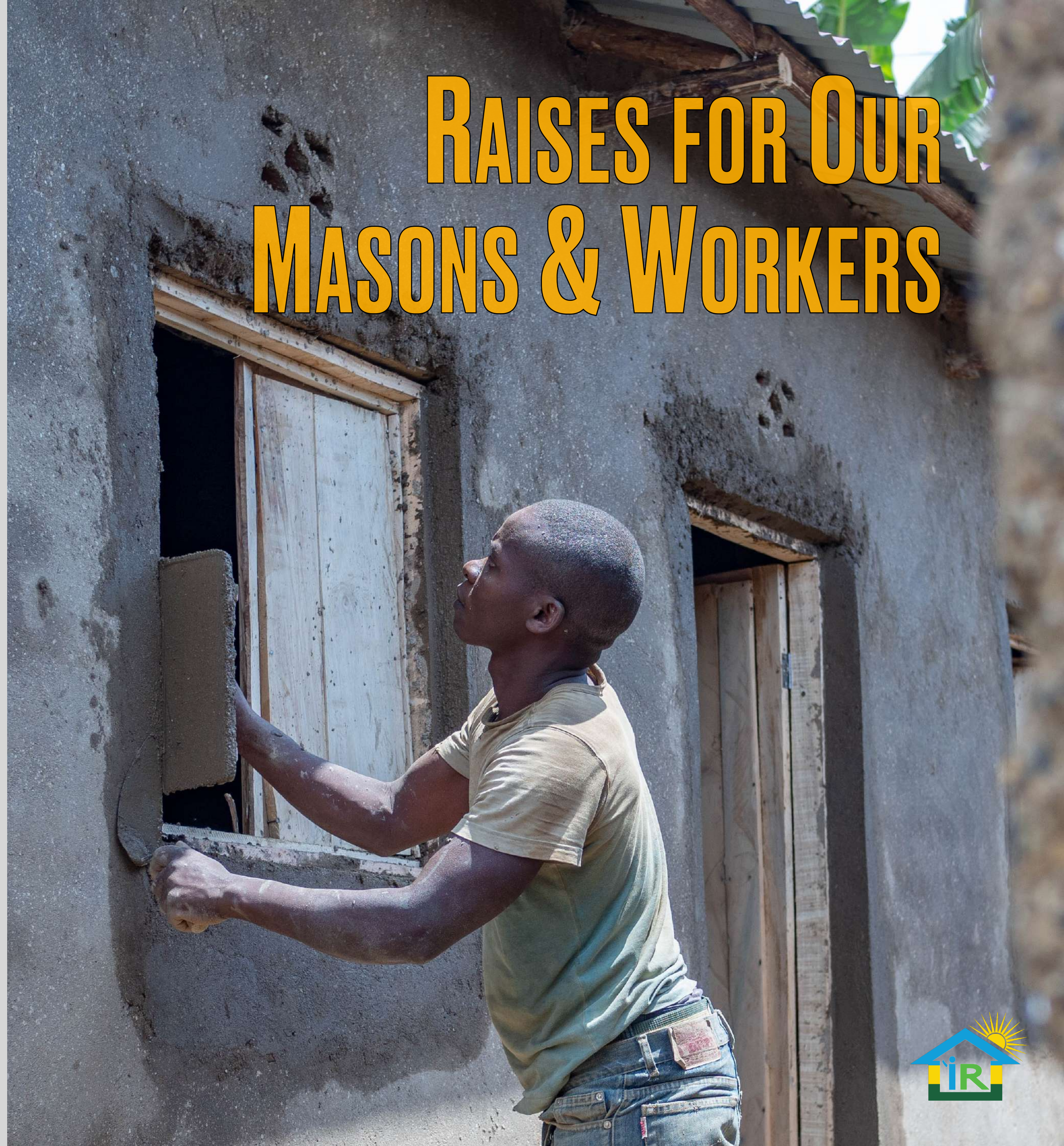


OUR GOALS

In 2023, our focus on continued organizational structure development will provide the necessary framework for achieving our goals to have a more significant impact on our Inshuti community. We hope to raise \$78,000 to construct 25 new houses over two-building seasons.



Now that we have the capacity to maintain two building seasons within a year, we aim to provide a 20% raise for all Inshuti masons and workers, guaranteeing their wages are not only keeping up with inflation but are also higher than those of other local jobs. This allows families to buy necessities, such as food, clothes, and school supplies, that grant access to human rights like the right to education and a standard of living.



RAISES FOR OUR MASONS & WORKERS



SOURCING OUTSIDE FUNDING

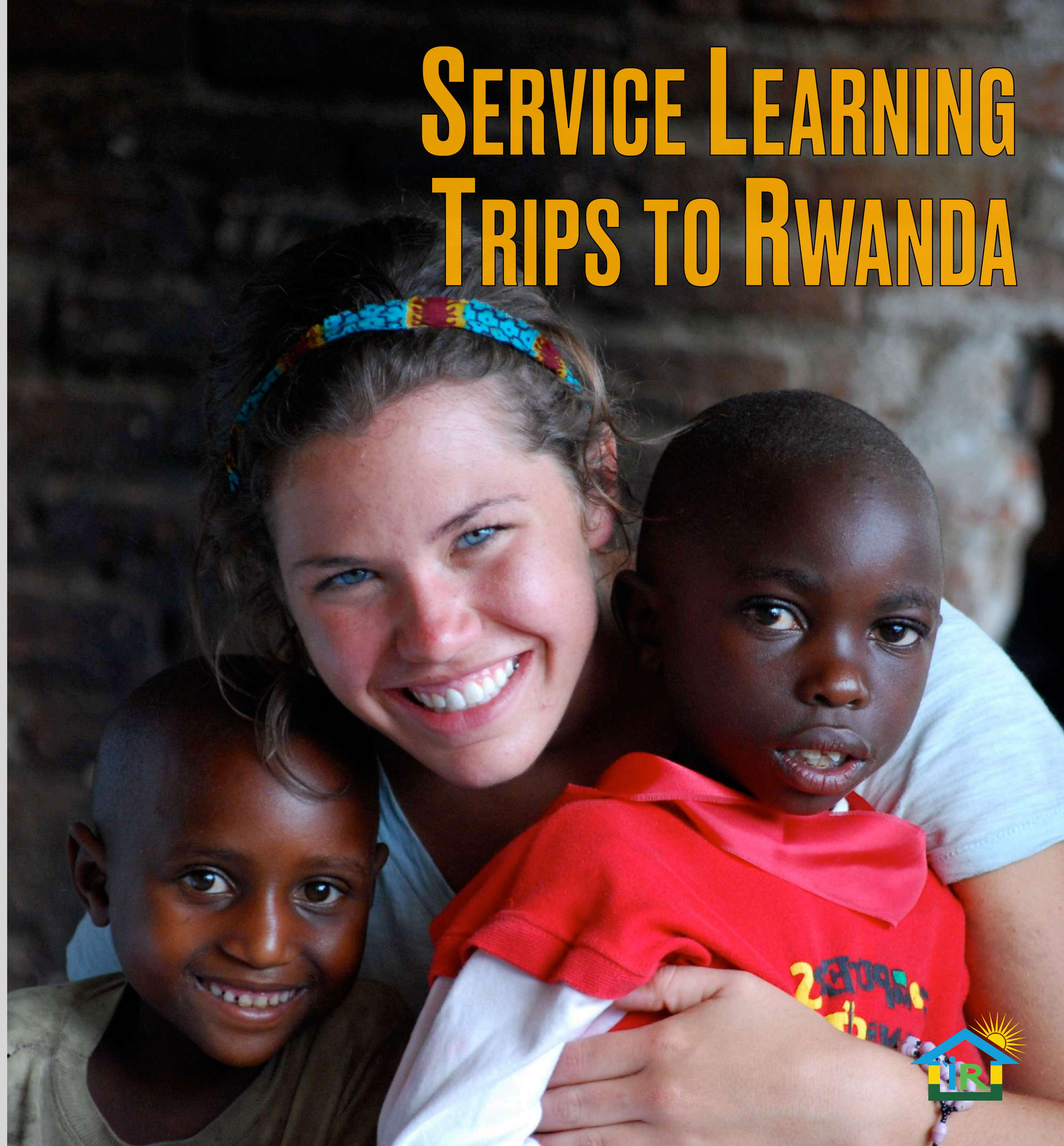


We are committed to the overall growth of Inshuti as a nonprofit organization supporting the Rwandan community. We have expanded our donor base with each building season to increase revenue. Knowing there is a plateau in the amount of money raised through personal donations, we seek to source outside funding, such as partnerships with corporations, collaborating with larger NGOs, and applying for grants.



Inshuti is happy to announce a partnership with Gogi Abroad, a Vermont-based travel company that offers service learning trips. In 2023, we will begin offering volunteer experiences for school groups and young adults seeking to broaden their horizons, learn about Rwandan culture and help build an Inshuti house. Our collaboration with Gogi will further our mission of connecting communities across the globe.

SERVICE LEARNING TRIPS TO RWANDA





THANK YOU FOR YOUR SUPPORT!

Together we are building homes, creating local jobs and growing a community of Inshuti.

